



MYKONOS BLU ON BLUE. THE CYCLADIC ICON





MYKONOS **BLU**

A RESORT TO LIVE®



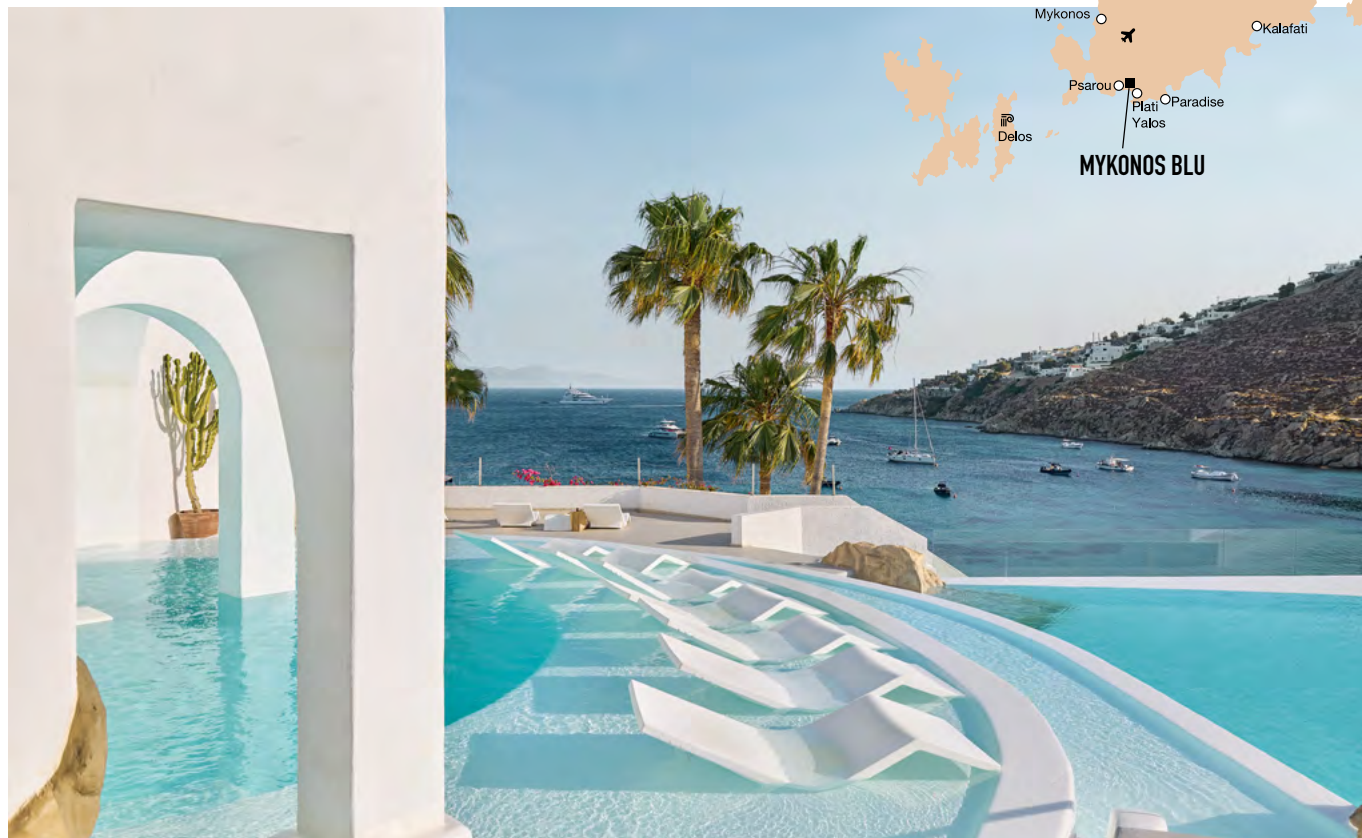
A CYCLADIC ICON ON THE MOST CELEBRATED BEACH OF THE ISLAND.  
AT PSAROU, THE AIR FEELS LUXE AND MYSTIFYING.

Mykonos Blu gazes at the Aegean Sea and the superyachts.  
Meticulously revamped, its Cycladic architecture enhanced, it's where the Glitterati  
meet and breathe in the views – the best in Mykonos.



VIRTUOSO  
PREFERRED

MYKONOS BLU - A GRECOTEL RESORT TO LIVE



## IDEAL FOR

All ages

## NEWS 2025

Renovated rooms with cutting-edge design, glistening aesthetic and seamless indoor-outdoor harmony.

## LOCATION

Overlooking the Psarou beach Town of Mykonos: 4,5 km • Airport: 3,2 km • Port: 5 km

## ACCOMMODATION

Total Rooms 103 • Bungalows 68 • Apartments 8 • Suites 18 • Villas 7

## BEACH & POOLS

• Steps leading down to Psarou – a sandy beach • 1 Seawater infinity pool • 3 sharing pools for designated rooms • 19 private pools

## FEATURES

• Elixir Wellness Center with sauna & fitness room • Conference & Meeting facilities

## AWARDS

• Green & Fair Hotel 2023 by TUI • Gold Award in Category Best Greek Boutique Resort 2022 by Greek hospitality awards • ROYAL BLU MANSION VILLA in the category "Greece's Leading Luxury Hotel Villa 2020" • TUV Austria Hellas - ISO 10002: 2014 - Quality Management Guidelines for Customer Satisfaction and Complaint Management • Blue flag • EXCELLENCE AWARD 2023 by Tripadvisor

## MEAL PLANS

**Breakfast** A stunning variety of choices, ranging from the lavishness of American-style buffet to the elegance of exclusive à la carte options with local delicacies. Early & Late breakfast as well as In-room breakfast services are available upon request.

## RESTAURANTS & BARS

### BREAKFAST

**Aegean Poets** Full American & Greek Breakfast Buffet from 07:30-11:00. Buffet laden with an array of fresh, seasonal, locally sourced and organic products. Menu of made-to-order egg dishes. Continental Breakfast from 11:00-12:00.

### LUNCH

**L' Archipel Brasserie.** À la carte Greek and Seafood Specialties • Kids' menus

### DINNER

**Aegean Poets** Mediterranean Grill Steak & Seafood Cuisine • Theme buffets occasionally • Kids' menus

**Vegan / Vegetarian / Gluten Free options**, as well as Vegan and BIO wines available in all restaurants.

### SNACKS

Service on the beach & at the pool. Refreshing drinks and a light snack menu.

### BARS

**Delos Lounges Rooftop Bar** With breathtaking views

**ROOM SERVICE** 24 hours In Room Dining



## SPECIAL DINING

A personalised dining experience, in room/villa (extra charge).

## KIDS

**Kids Go Free** Children up to 6 years old enjoy free dining options from the special kids' menu.

**Grecobaby, 0-2 yrs.** Pre-arrival order of baby equipment • Extra charge Baby-sitting • Infant food (to order in restaurants)

## SPA & WELLNESS

### ELIXIR WELLNESS CENTRE

**Spa Facilities** • Private Massage Rooms • Changing Rooms • Sauna • Body & Soul Elixirs • Luxury Facials & Body Treatments • Signature Treatments • Manicure & Pedicure

**Gym** Fitness room with Technogym cardio fitness equipment including: 1x Cybex Dual axis pulldown, 1x Cybex axis chest press, 1x Cybex leg extension, 1x Cybex seated leg curl, 3x Technogym treadmill, 1x elliptical cross trainer, 2x Technogym exercise bike, 1x Cybex bent leg abdominal board, 2x TRX

## FITNESS & ACTIVITIES

**Gymnastics** Yoga Classes (extra charge), Jogging

**Outside The Hotel** Extra charge: Watersports • Scuba Diving • Fishing caiques & private water taxis to island beaches • Jeep safari • Fishing • Horse riding

## ENVIRONMENTAL POLICY

- Green Key awarded hotel • Energy and water saving programmes
- Eco friendly cleaning agents.

## SERVICES

**WiFi** Free, in all hotel areas and guest rooms.

**Guest Portal** Useful information & services about their stay, available online for all guests.

**Grecotel Mobile App** Grecotel Mobile App proposes a world of information regarding your stay, online-reservation at the à la carte restaurants and services in and out of the hotel.

**24h WhatsApp Concierge** Designated staff members are at call on WhatsApp, to assist guests on everything they may desire.

**Multilingual personnel** English, German, Russian, French, Italian, Greek, Spanish, Arabic, Serbian, Polish

**Medical Services** 24hr Medical cover, Doctor on call -extra charges may apply depending on guests' travel insurance • Pharmacy at 3 km • Hospital at 3 km

**Transport** Car and motorbike rental • Bus stop directly outside the hotel

**Taxi Service on request** • to Mykonos town (3,5km) • to Airport (4km) • Taxi & Limo Service available on request

**Money** All major Credit Cards are accepted • Nearest ATM at 1,5 km • Nearest Bank at 3 km

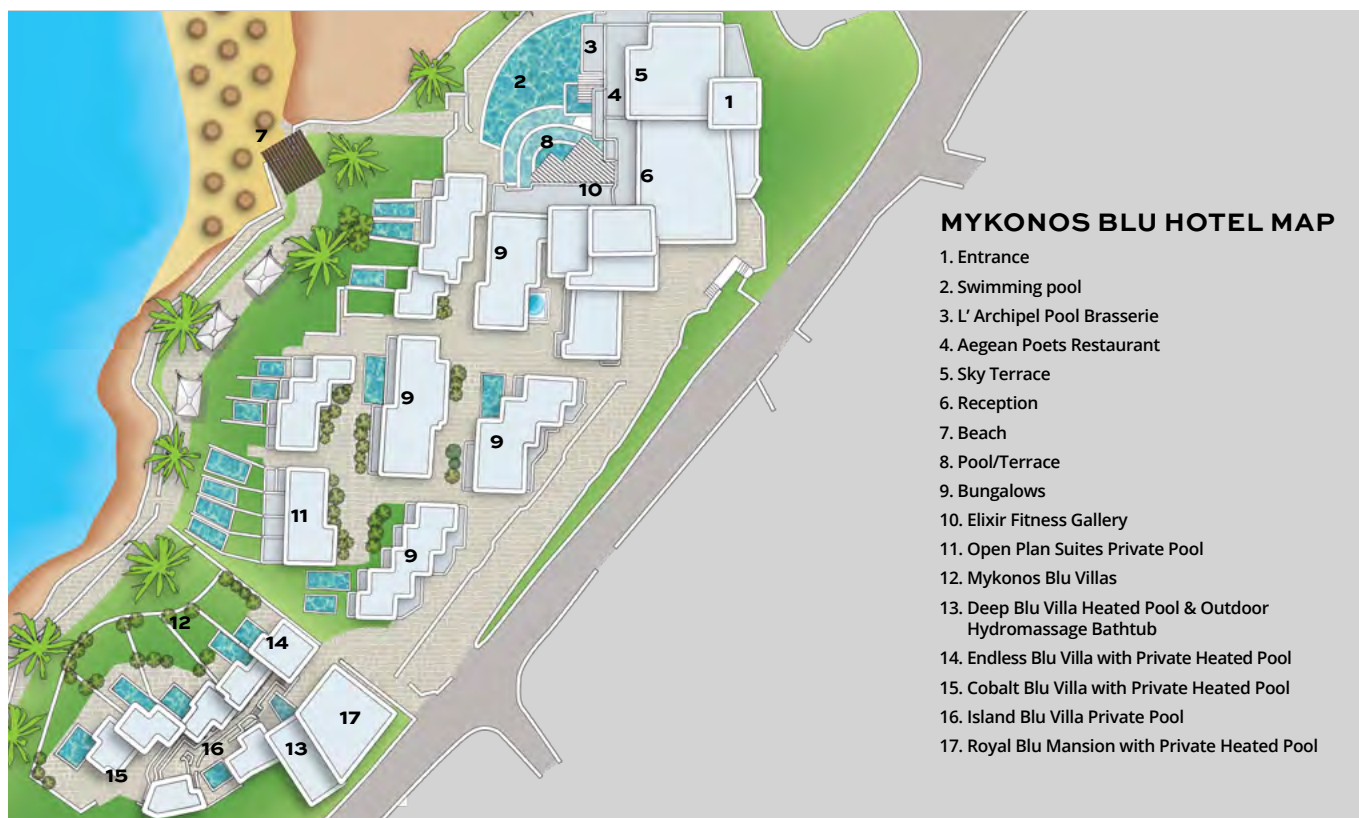
**Voltage** Current 220V.

**Mobility Impaired Guests** Due to hotel's layout some departments and rooms are not accessible for the mobility impaired guests.

**Animals** Dogs that weigh up to 8kg are allowed in selected villas & bungalows with private gardens. Restrictions apply. Service animals are allowed to accompany their handler in all hotel premises. View pets policy at [grecotel.com/pets-policy](http://grecotel.com/pets-policy)

**Official Hotel Categorization** Five star Resort

**Contact details** Psarou, Mykonos, GR 84600 TEL.: (+30) +30 22890 27900 E-mail: [reservations.mb@grecotel.com](mailto:reservations.mb@grecotel.com)



## ACCOMMODATION CHART

### All room types include:

- Mini-bar with international brands
- Complimentary tea & coffee facilities
- Nespresso Machine with 2 complimentary pods per adult/per day
- In-room safe
- Room service
- Laundry services
- Luxurious beds & linens
- Hairdryer
- Bathrobes & slippers
- Deluxe bathroom amenities
- Complimentary WiFi
- LCD TV
- Resort beach bag with towels & beach accessories

### Additionally in villas:

- Full set bar concept
- Pillow menu

ROOM TYPES	LOCATION	SIZE	SLEEPS	VIEW
Island Bungalow Garden View	Garden Area	up to 29 m <sup>2</sup>	2+1	Hotel or Garden
Island Bungalow, Side Sea View	Garden Area	up to 29 m <sup>2</sup>	2+1	Side Sea
Island Bungalow, Deluxe	Prime Location	up to 29 m <sup>2</sup>	2+1	Sea
Waterfront Bungalow	Prime Waterfront	up to 29 m <sup>2</sup>	2+1	Sea
Luxury Island Bungalow with Private Pool	Garden Area	up to 40 m <sup>2</sup> ,	2+1	Garden
Luxury Bungalow with outdoor Hydromassage Bathtub	Garden Area	up to 35m <sup>2</sup>	2+1	Hotel
Junior Bungalow Suite	Waterfront Garden Area	35-40 m <sup>2</sup>	2+1	Sea
Mykonos Blu Apartment	Beachfront	52-70 m <sup>2</sup>	2+2	Sea, Sea Side or Garden
Mykonos Blu Apartment with sharing pool	Prime Location	52-70 m <sup>2</sup>	2+2 / 4	Hotel or Garden
Exclusive Bungalow Suite	Prime Location	up to 52m <sup>2</sup>	2+1	Panoramic Sea
Exclusive Bungalow Suite with outdoor Hydromassage Bathtub	Prime Location	up to 55m <sup>2</sup>	2+2	Panoramic Sea
Open Plan Suite with Private Pool	Prime Waterfront	up to 45m <sup>2</sup>	2+1	Panoramic Sea
Luna Blu Suite with Private Heated Indoor Pool	Prime Waterfront	125m <sup>2</sup>	2	Direct Sea
S-Cape Suite	Prime Waterfront	80m <sup>2</sup>	2+2	Direct Sea
Euphoria Suite	Prime Waterfront	100m <sup>2</sup>	4+2	Direct Sea
Grand Blu Suite with private pool	Prime Waterfront	70m <sup>2</sup>	2+2	Direct Sea
Mykonos Blu Junior Villa with private pool	Prime Waterfront	50m <sup>2</sup>	2+1	Panoramic Sea
Cobalt Blu Villa with Private Heated Pool	Prime Waterfront	60-80m <sup>2</sup>	2+3	Panoramic Sea
Island Blu Villa with Private Pool	Prime Location on the Ground Floor	100m <sup>2</sup>	4+2	Direct Sea
Endless Blu Villa with Private Heated Pool	Prime Waterfront	82m <sup>2</sup>	4+2	Panoramic sea
Deep Blu Villa with Private Pool	Prime Waterfront	125m <sup>2</sup>	4+2	Lofty Panoramic Sea
Royal Blu Mansion with Private Heated Pool	Prime Waterfront	300m <sup>2</sup>	8+2	Lofty Panoramic Sea

ACCOMMODATION LAYOUTS & PHOTOS ARE SAMPLES AND MAY VARY DEPENDING ON THE POSITION WITHIN THE HOTEL.  
MEASUREMENTS ARE APPROXIMATE TO THE NEAREST m<sup>2</sup>

**View more details & photos about facilities, services & room details online at [mykonosblu.com](https://mykonosblu.com)**



## ISLAND BUNGALOW GARDEN VIEW HOTEL OR GARDEN VIEW

**Location:** Garden Area

**View:** Hotel or Garden View

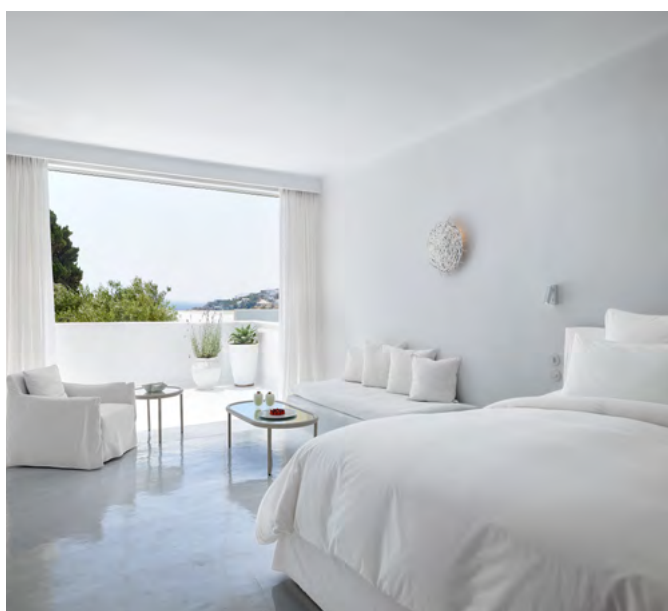
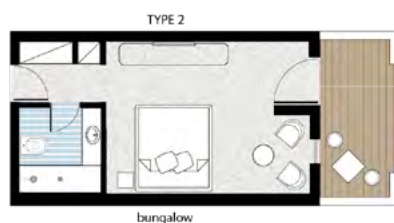
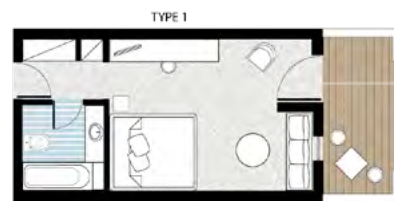
**Size:** Indoor up to 29 sq.m.,  
outdoor: 5 sq.m.

**Layout:** Open plan

**Sleeps:** 2 adults + 1 child

**Beds:** Double king size bed &  
extra sofa bed

**Bath:** En-suite bathroom with  
one washbasin, bathtub. In most  
guestrooms features polished  
stone shower in a carved recess  
with inset phototherapy.



## ISLAND BUNGALOW SIDE SEA VIEW

**Location:** Garden Area

**View:** Side Sea

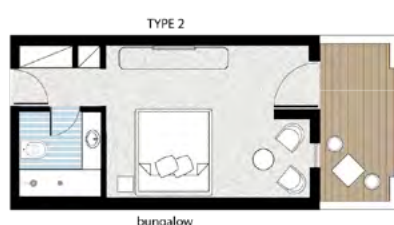
**Size:** Indoor up to 29 sq.m.,  
outdoor: 10 sq.m.

**Layout:** Open plan

**Sleeps:** 2 adults + 1 child

**Beds:** Double king size bed &  
extra sofa bed

**Bath:** En-suite bathroom with  
one washbasin, bathtub. In most  
guestrooms features polished  
stone shower in a carved recess  
with inset phototherapy.



## ISLAND BUNGALOW DELUXE SEA VIEW

**Location:** Prime Location

**View:** Amazing Sea View

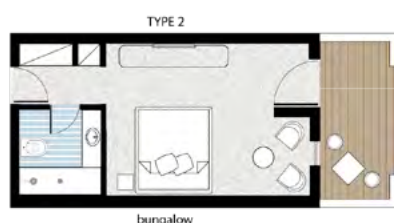
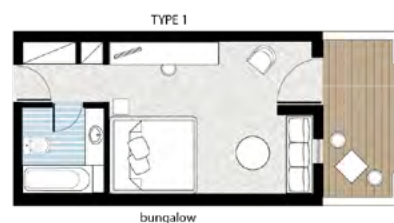
**Size:** Indoor up to 29 sq.m.,  
outdoor: 6 sq.m.

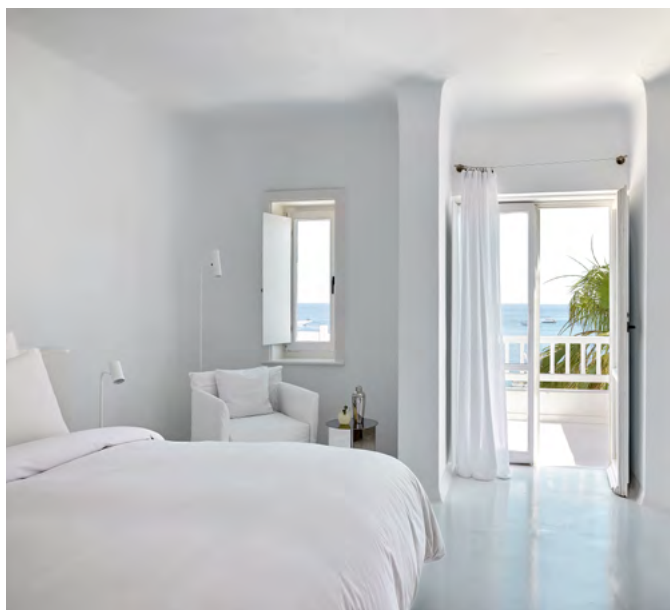
**Layout:** Open plan

**Sleeps:** 2 adults + 1 child

**Beds:** Double king size bed &  
extra sofa bed

**Bath:** Walled-off bathroom  
with one washbasin & a classic  
bathtub. Selected bungalows  
feature spacious bathroom with  
a recessed stone shower with  
inset phototherapy.





## WATERFRONT BUNGALOW

### DIRECT SEA VIEW

**Location:** Prime Waterfront

**View:** Direct Sea View

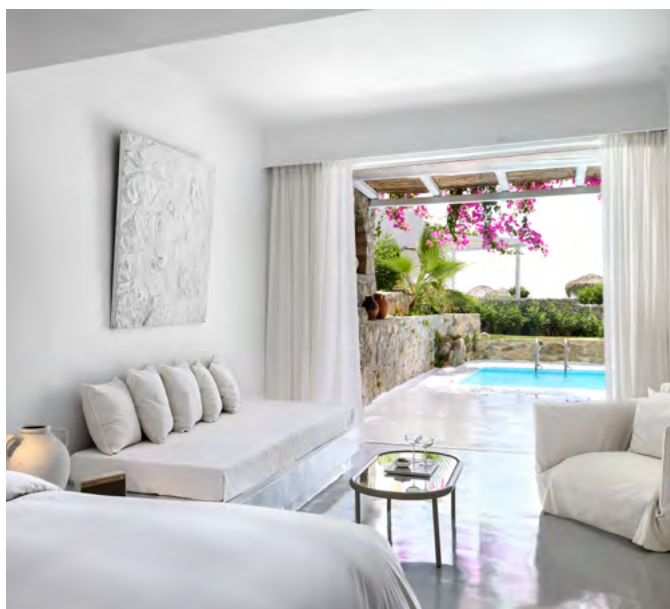
**Size:** Indoor up to 29 sq.m., outdoor: 7 sq.m.

**Layout:** Open plan

**Sleeps:** 2 adults + 1 child

**Beds:** Double king size bed & extra sofa bed

**Bath:** Polished stone shower in carved recess with inset phototherapy in selected guestrooms, one washbasin



## LUXURY ISLAND BUNGALOW

### WITH PRIVATE POOL GARDEN VIEW

**Location:** Garden area

**View:** Limited Sea View

**Size:** Indoor up to 40 sq.m., outdoor up to 60 sq.m.

**Layout:** Open plan

**Sleeps:** 2 adults + 1 child

**Beds:** Double king size bed & extra sofa bed

**Bath:** Spacious bathroom with double wash basins, bathtub and separate polished stone shower in a carved recess with phototherapy effects.

**Pool:** Private swimming pool 12-15m<sup>2</sup>

**Specials:** Private waterfront garden



## JUNIOR BUNGALOW SUITE

### SEA VIEW

**Location:** Waterfront Garden Area

**View:** Sea View

**Size:** Indoor: 35-40 sq.m., outdoor up to 40 sq.m.

**Layout:** Open-plan

**Sleeps:** 2 adults + 1 child

**Beds:** Double king size bed & extra sofa bed

**Bath:** Spacious bathroom and grooming area with built in bathtub & separate shower (selected suites) or Polished stone bathroom with a round bathtub for two (selected suites), Marble double wash basins (selected suites)

**Specials:** Private seafront terrace. Traditional Cycladic architecture with polished stone paired with contemporary design





## LUXURY BUNGALOW WITH OUTDOOR HYDROMASSAGE BATHTUB GARDEN VIEW

**Location:** Scattered around the hotel.

**View:** Hotel View

**Size:** Indoor up to 35 sq.m., outdoor up to 60 sq.m.

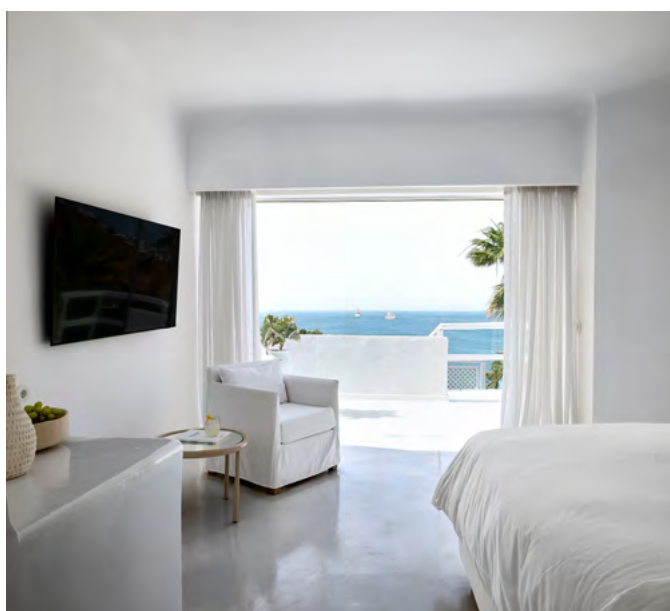
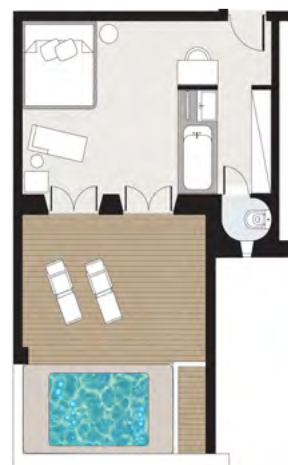
**Layout:** Open plan

**Sleeps:** 2 adults + 1 child

**Beds:** Double king size bed & extra sofa bed

**Bath:** Spacious bathroom with polished stone shower in a carved recess with inset phototherapy

**Specials:** Private terrace with a heated outdoor Hydromassage bathtub.



## MYKONOS BLU APARTMENT SEA, SEA SIDE OR GARDEN VIEW

**Location:** Exceptional waterfront location

**View:** Sea, Sea Side or Garden View

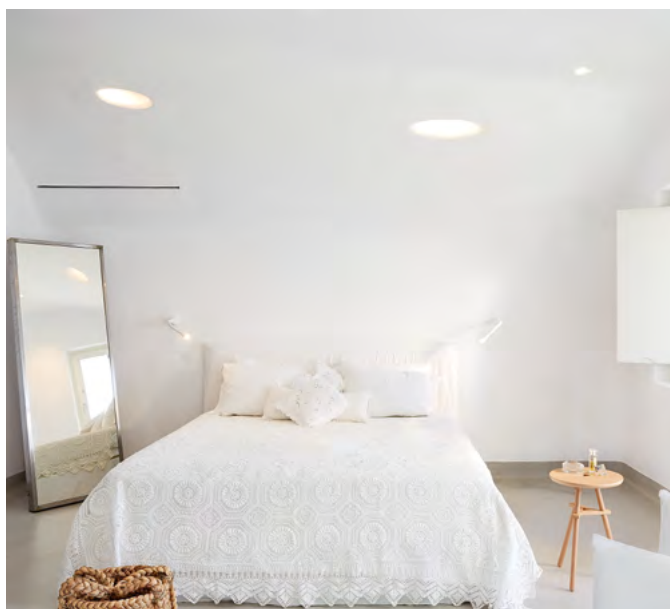
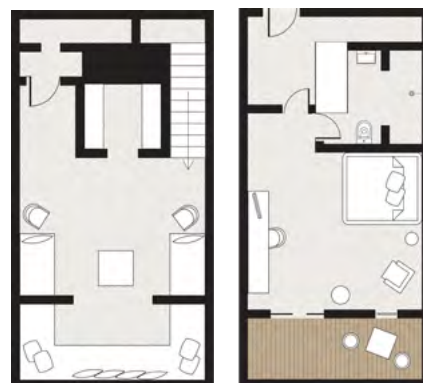
**Size:** Indoor: 52-70 sq.m., outdoor: 10 sq.m.

**Layout:** Split level

**Sleeps:** 2 adults + 2 children

**Beds:** Double king size bed & 2 extra sofa beds

**Bath:** Polished stone shower alcove with phototherapy effects. Extravagant second private bathroom with bathtub



## MYKONOS BLU APARTMENT WITH SHARING POOL HOTEL OR GARDEN VIEW

**Location:** Prime location **View:** Hotel or Garden View

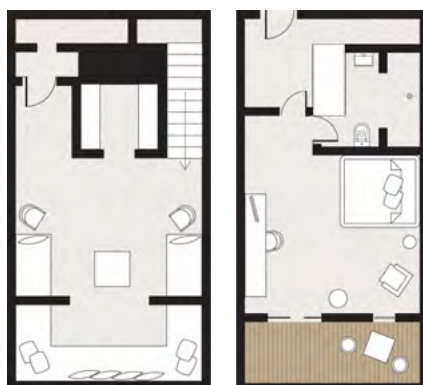
**Size:** Indoor: 52-70 sq.m., outdoor: 10 sq.m. **Layout:** Split level

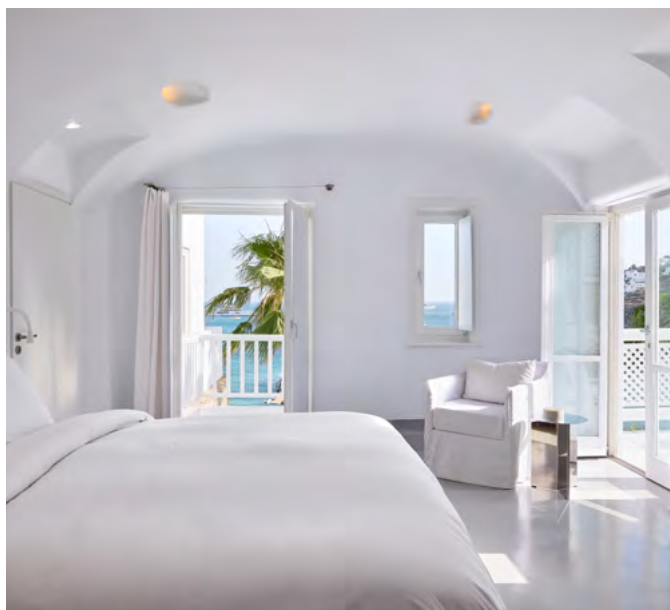
**Sleeps:** 2 adults + 2 children / 4 adults

**Beds:** Double king size bed & 2 extra sofa beds

**Bath:** Polished stone shower alcove with phototherapy effects. Extravagant second private bathroom with bathtub

**Specials:** Sharing Pool 15 sq.m. Shaded terrace.





## EXCLUSIVE BUNGALOW SUITE PANORAMIC SEA VIEW

**Location:** Prime Location

**View:** Panoramic Sea View

**Size:** Indoor up to 52 sq.m., outdoor: 20 sq.m.

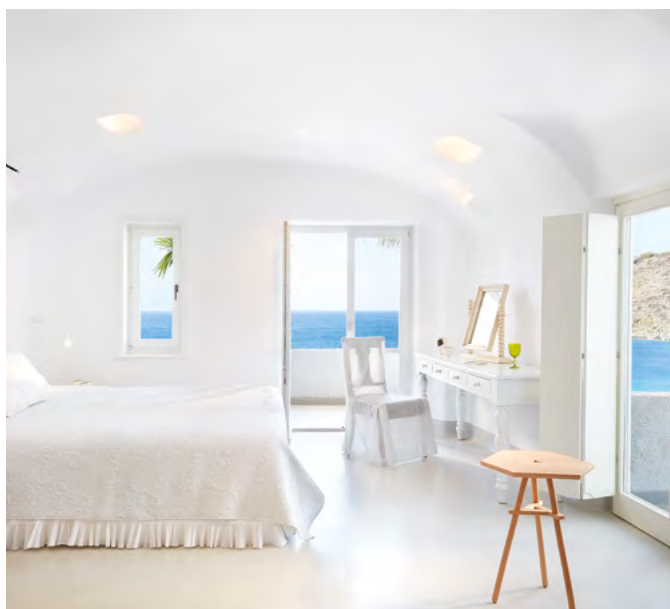
**Layout:** Open-plan

**Sleeps:** 2 adults + 1 child

**Beds:** King size bed facing the sea with voile canopy (in selected rooms) & 2 extra sofa beds

**Bath:** Deep soaking polished stone bathtub. Separate polished stone shower in a carved recess with inset phototherapy

**Specials:** Walk-in wardrobes. Exposed rock wall (in selected guest rooms)



## EXCLUSIVE BUNGALOW SUITE WITH OUTDOOR HYDROMASSAGE BATHTUB PANORAMIC SEA VIEW

**Location:** Prime Location

**View:** Panoramic Sea View

**Size:** Indoor up to 55 sq.m., outdoor: 20 sq.m.

**Layout:** 2 separate sleeping areas

**Sleeps:** 2 adults + 2 children

**Beds:** Double king size bed & 2 extra sofa beds

**Bath:** Polished concrete shower featuring phototherapy

**Specials:** Private shaded terrace with a heated outdoor hydromassage bathtub. Prime waterfront location overlooking Psarou Beach.



## OPEN PLAN SUITE WITH PRIVATE POOL PANORAMIC SEA VIEW

**Location:** Prime Waterfront

**View:** Panoramic Sea

**Size:** Indoor up to 45 sq.m., outdoor up to 50 sq.m.

**Layout:** Open-plan

**Sleeps:** 2 adults + 1 child

**Beds:** Double king size bed & extra sofa bed

**Bath:** One wash basin, bathtub and shower

**Pool:** Private infinity-edge swimming pool 13-18m<sup>2</sup>, heated up to 25°C upon request with extra charge (90€ per day)

**Specials:** Private shaded terrace





## LUNA BLU SUITE WITH PRIVATE HEATED INDOOR POOL DIRECT SEA VIEW

**Location:** Prime Waterfront

**View:** Direct Sea View

**Size:** Indoor: 125 sq.m., outdoor: 15 sq.m.

**Layout:** Open-plan. Folding floor-to-ceiling glass doors can separate the bedroom from the indoor pool.

**Sleeps:** 2 adults **Beds:** King size bed facing the sea

**Bath:** 2 wash basins and separate polished stone shower alcove with phototherapy effects.

**Pool:** Private indoor pool 20m<sup>2</sup>, heated up to 25°C upon request with extra charge (90€ per day)

**Specials:** Private flower and lawn garden



## S-CAPE SUITE DIRECT SEA VIEW

**Location:** Prime Waterfront Location

**View:** Direct Sea View

**Size:** Indoor: 80 sq.m., outdoor up to 35 sq.m. Layout: 1 master bedroom and living room area

**Sleeps:** 2 adults + 2 children

**Beds:** Double king size bed & 2 extra sofa beds

**Bath:** Shower. Separate WC with wash basin

**Specials:** Walk in wardrobes. Prime waterfront location overlooking Psarou Beach



## EUPHORIA SUITE DIRECT SEA VIEW

**Location:** Prime Waterfront Location

**View:** Direct Sea View Size: Indoor: 100 sq.m., outdoor: 35 sq.m.

**Layout:** 2 separate sleeping areas and an open-plan lounge area

**Sleeps:** 4 adults + 2 children

**Beds:** 2 Double king size beds & 2 extra sofa beds

**Bath:** 2 Bathrooms. Separate polished stone shower, separate WC

**Specials:** Prime waterfront location overlooking Psarou Beach. 3 spacious private balconies



## GRAND BLU SUITE WITH PRIVATE POOL DIRECT SEA VIEW

**Location:** Prime Waterfront

**View:** Direct Sea View

**Size:** Indoor: 70 sq.m., outdoor: 70 sq.m.

**Layout:** 1 master bedroom and living room area

**Sleeps:** 2 adults + 2 children

**Beds:** Double king size bed & 2 extra sofa beds

**Bath:** 1 washbasin, shower and separate WC

**Pool:** Private swimming pool 25m<sup>2</sup>, heated up to 25°C upon request with extra charge (90€ per day)

**Specials:** Prime waterfront location overlooking Psarou Beach. Private shaded terrace with dining furniture and sun loungers



## MYKONOS BLU JUNIOR VILLA WITH PRIVATE POOL PANORAMIC SEA VIEW

**Location:** Prime Waterfront

**View:** Panoramic Sea View

**Size:** Indoor up to 50 sq.m., outdoor up to 100 sq.m.

**Layout:** Open-plan, with distinct sleeping and living areas

**Sleeps:** 2 adults + 1 child

**Beds:** King size bed with voile canopy & extra sofa bed

**Bath:** 1 wash basin and Phototherapy bathtub

**Pool:** Private infinity swimming pool 25m<sup>2</sup>

**Specials:** Shaded terrace with outdoor dining area. Flower and lawn garden. Amazing direct views from the bed to the sea. Exposed rock cave, in selected villas.



## COBALT BLU VILLA WITH PRIVATE HEATED POOL PANORAMIC SEA VIEW

**Location:** Prime Waterfront

**View:** Panoramic Sea View

**Size:** Indoor: 60-80 sq.m., outdoor: 150 sq.m.

**Layout:** Two-Villa Complex, Split-level

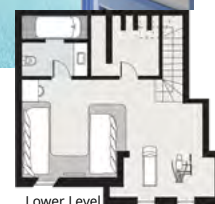
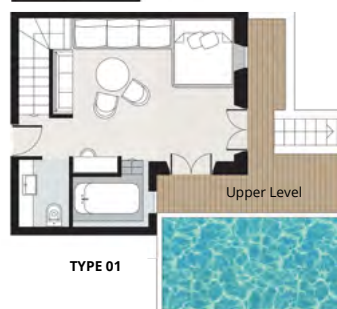
**Sleeps:** 2 adults + 3 children

**Beds:** Double king size bed & 2 extra sofa beds

**Bath:** 1 sunken polished stone bathtub and shower with phototherapy effects. Double marble basins and separate WC

**Pool:** Private infinity swimming pool 25m<sup>2</sup>, heated up to 25°C upon request with extra charge (90€ per day)

**Specials:** Shaded terrace and extended lawn garden





## ISLAND BLU VILLA WITH PRIVATE POOL DIRECT SEA VIEW

A unique architectural idea for those wishing discrete luxury and comfort.

**Location:** Prime Location on the Ground Floor

**View:** Direct Sea View

**Size:** Indoor: 100 sq.m., outdoor: 65 sq.m.

**Layout:** Two-Villas area, separated by a pool terrace

**Sleeps:** 4 adults + 2 children

**Beds:** 1 Double King size bed facing the sea with voile canopy, 1 Double king size bed & 2 extra sofa beds

**Bath:** En-suite bathroom with built-in bathtub made of polished concrete. Double marble wash basins and rain shower with phototherapy effects.

**Pool:** Private swimming pool 30m<sup>2</sup>

**Specials:** Pool terrace with private pool. Exposed rock cave and rock wall





## ENDLESS BLU VILLA WITH PRIVATE HEATED POOL PANORAMIC SEA VIEW

**Location:** Prime Waterfront

**View:** Panoramic Sea View

**Size:** Indoor: 82 sq.m., outdoor: 210 sq.m.

**Layout:** Two villa areas, 2 Master Bedrooms

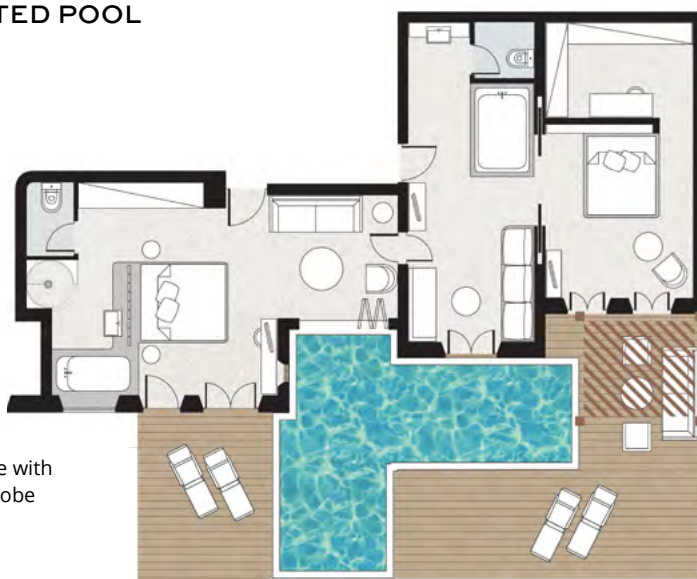
**Sleeps:** 4 adults + 2 children

**Beds:** 2 Double king size beds with voile canopy & 2 extra sofa beds

**Bath:** Walk in wardrobe and living room with large built in bathtub with phototherapy effects, double marble washbasins and separate WC. Sea view bathtub with a built-in bath made of polished concrete and a blue grotto: a separate polished stone shower alcove with phototherapy effects.

**Pool:** Private heated swimming pool 32m<sup>2</sup>, heated up to 25°C upon request with extra charge (90€ per day)

**Specials:** Amazing direct views from the bed to the sea. Shaded terrace with outdoor dining area. Flower and lawn garden, 210 sq.m. Walk-in wardrobe





## DEEP BLU VILLA WITH PRIVATE POOL LOFTY PANORAMIC SEA VIEW

**Location:** Prime Waterfront

**View:** Loftly Panoramic Sea View

**Size:** Indoor: 125 sq.m., outdoor 80 sq.m.

**Layout:** Two Level Residence

**Sleeps:** 4 adults + 2 children

**Beds:** 1 Double king size bed & 2 extra single beds

**Bath:** A built-in bath made of polished concrete and a blue grotto: a separate polished stone shower alcove with phototherapy effects. Second spacious bathroom

**Pool:** Private shaded swimming pool 30m<sup>2</sup>, heated up to 25°C upon request with extra charge (90€ per day)

**Specials:** Private wardrobe area with large cupboard space. Amazing direct views from the bed to the sea. Elevator. 125 sq.m. indoor area. Spacious living room with large glass folding panels leading directly to the private shaded pool. Outdoor Hydromassage bathtub. Loftly views from private terrace





## ROYAL BLU MANSION WITH PRIVATE HEATED POOL LOFTY PANORAMIC SEA VIEW

**Location:** Prime Waterfront View: Lofty Panoramic Sea View

**Size:** Indoor: 300 sq.m., outdoor 200 sq.m.

**Layout:** Two Level Residence, 4 Master Bedrooms

**Sleeps:** 8 adults + 2 children

**Beds:** Master Bedroom Suite with direct views from bed to sea, 3 Double king size beds & 2 extra single beds

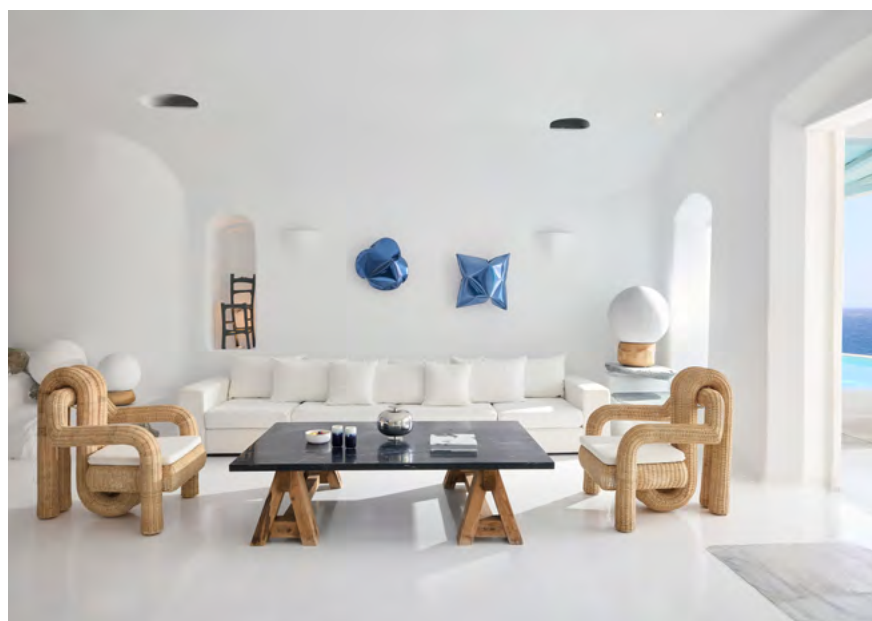
**Bath:** En-suite bathroom with bath, separate shower, WC and double vanity unit. Two further Royal Blu Master Bedrooms offers a private bathroom with hand carved bathtub.

**Pool:** Private shaded swimming pool 30m<sup>2</sup>, heated up to 25°C upon request with extra charge (90€ per day)

**Specials:** Private entrance and elevator. Extravagant reception area and lounges. 24h butler service. Private living room with shaded pool. 3 spacious fully furnished terraces with panoramic sea views & outdoor Hydromassage bathtubs. Private wardrobe area with large cupboard space. Staff room or kids room. Private parking. Private entrance.



Ground Floor



Upper Floor